

AURORA 2

PARETE VASCA, 2 ANTE A SOFFIETTO RIPIEGABILI ALL'INTERNO



150 cm



PORTA
5 mm



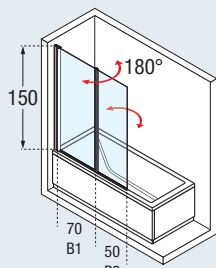
FISSO
6 mm



p. 309



3 cm



$B2 \leq B1 - 10 \text{ cm}$



Misure	Codice	Scelta Vetro			Scelta Profilo / Prezzo		
		1	2	4	A	B	K
		Trasparente	Aqua	Satin	Bianco	Silver	Cromo
120 x 150 H	AURORAN 2-	<input checked="" type="radio"/>	<input type="radio"/>	<input type="radio"/>	<input type="checkbox"/>	<input type="checkbox"/>	<input type="checkbox"/>
B1 = cm 30 ↔ 70 + B2 = 30 ↔ 60 x H 100 ↓ 150		AURORAN 2 SP					

ESEMPIO COMPILAZIONE CODICE:

AURORAN2-1A

=

AURORAN2-

+

1

+

A

IN USO



CHIUSO



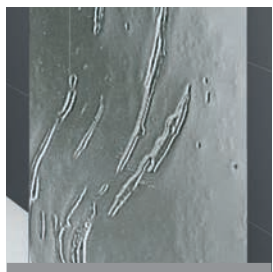
• Disponibilità indicativa deposito centrale 7gg.

DATI TECNICI

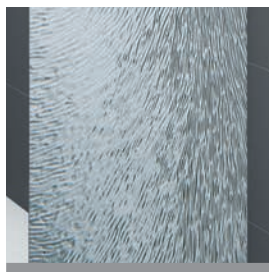
VETRO TEMPRATO (European standards UNI EN 14428)



trasparente
COD. 1



aqua
COD. 2
solo per:
- Young 2.0 1V, 3V, 1BSV,
- Aurora 1, 2, 3

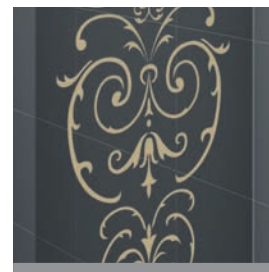


piumato
COD. 3
solo per: Aurora 9, Aurora 2AV4,
Aurora 2PV4, Aurora 2SV4, Aurora
3PV4, Aurora VFL4



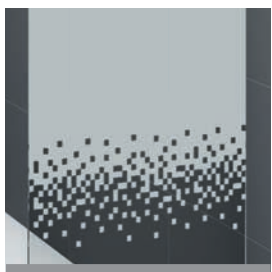
satin
COD. 4
solo per:
- Young 2.0 1V, 3V, 1BSV,
- Rose Rosse 2MV, 3PV, 2PV, PHV+F
- Aurora 1, 2, 3

SERIGRAFIA



victoriana oro
COD. 72
solo per: Young 2.0 1V, 3V, 1BSV

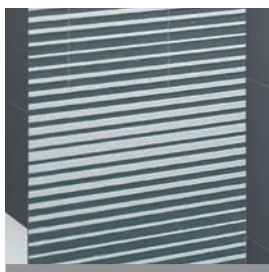
SERIGRAFIA



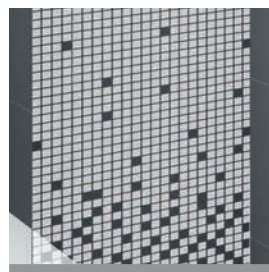
rose 1
COD. 56
solo per: Rose Rosse



rose 2
COD. 57
solo per: Rose Rosse



esprit
COD. 5
solo per: Aurora 2AV4, Aurora
2PV4, Aurora 2SV4, Aurora 3PV4,
Aurora VFL4



ravenna
COD. 51
solo per: Moon 1, Kuadra 3V

ACRILICO



anelli
COD. 16
solo per: Aurora 9



circolare
COD. 43
solo per: Aurora 2SV4, Aurora
3PV4, Aurora VFL4

FINITURA PROFILI



bianco
COD. A - D

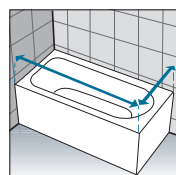


silver
COD. B
(eccetto: Aurora 9)



cromo
COD. K
(eccetto: Aurora 9)

COME RILEVARE LE MISURE



Rilevare le misure da muro a bordo esterno della vasca. Le misure devono essere rilevate sulla parete finita, a rivestimenti posati, secondo gli schemi riportati.